

Installation guide  
Part #  
C900D



M4X12MM M5X12MM M6X12MM M6X14MM  $\phi$ 6.5X $\phi$ 13X1.8 4X4 Allen key 5X5 Allen key  
A:8PCS B:8PCS C:3PCS D:2PCS E:16PCS F:1PCS G:1PCS

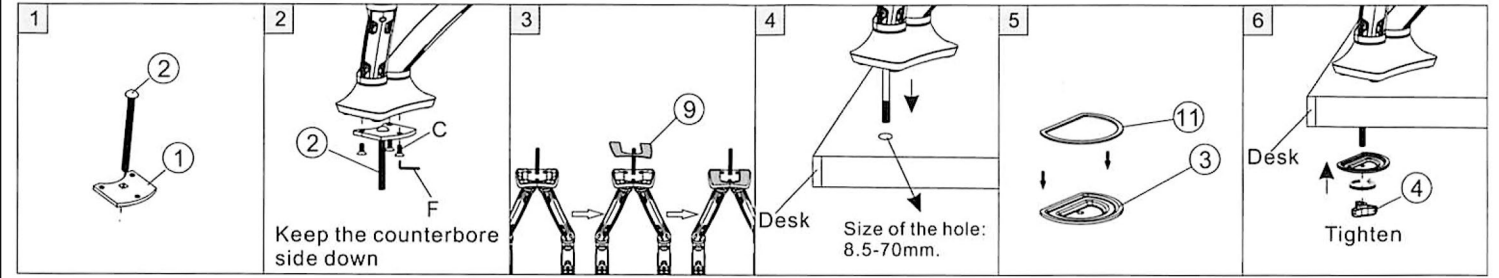
1	Bottom support 1	1PCS	
2	Screw	1PCS	
3	Washer	1PCS	
4	Butterfly knob	1PCS	
5	Bottom support 2	1PCS	
6	Knob	1PCS	
7	Cable cover 1	1PCS	
8	Nylon ties	10PCS	
9	Anti-slip rubber 1	1PCS	
10	Anti-slip rubber 2	4PCS	
11	Anti-slip rubber 3	1PCS	
12	Cable cover 2	2PCS	
13	M6 box wrench	1PCS	



## STEP2-B

Option 2: Grommet

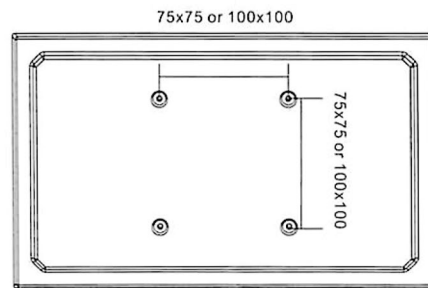
▲ For table thickness:25-100mm



## STEP1

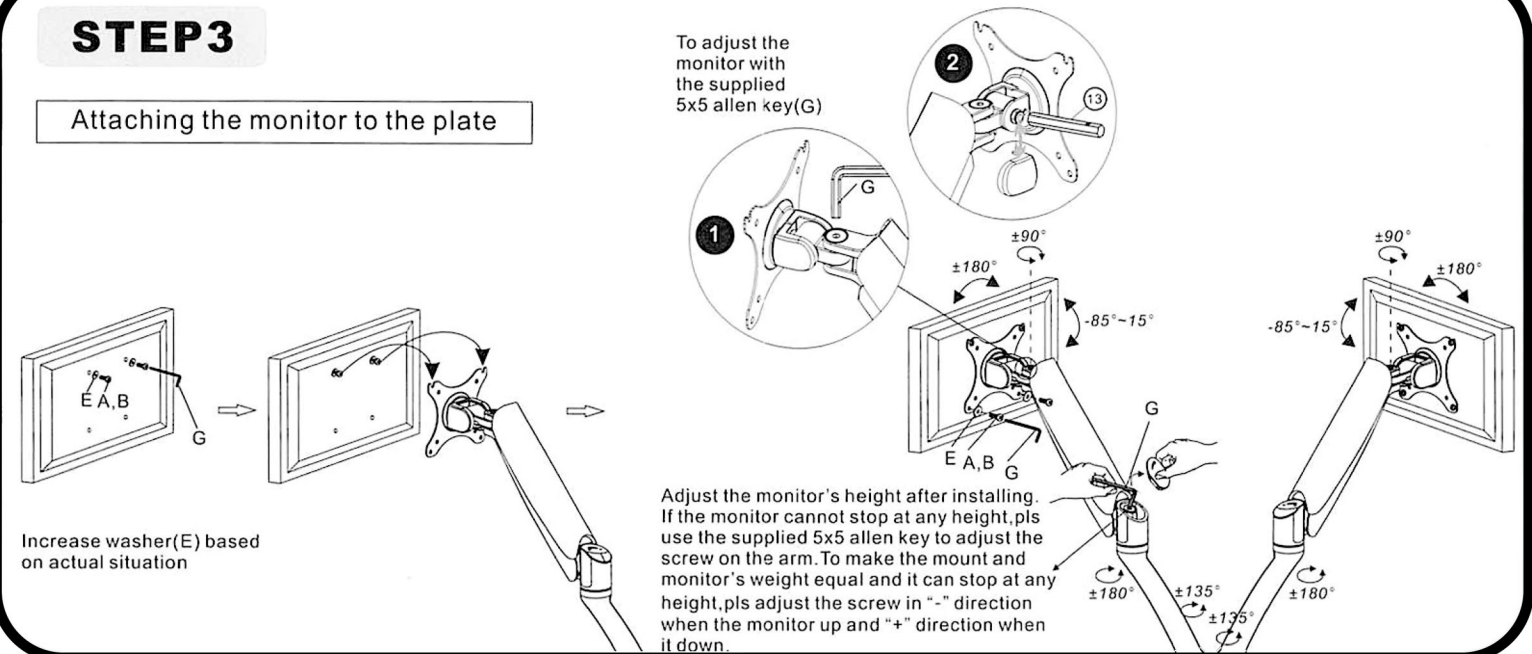
Preparations before installing monitor

1. Make sure there are VESA holes 100x100mm or 75x75mm in the monitor. If not, the mount couldn't be installed.
2. Remove the original fixed base of monitor. Be careful not to scratch the screen.



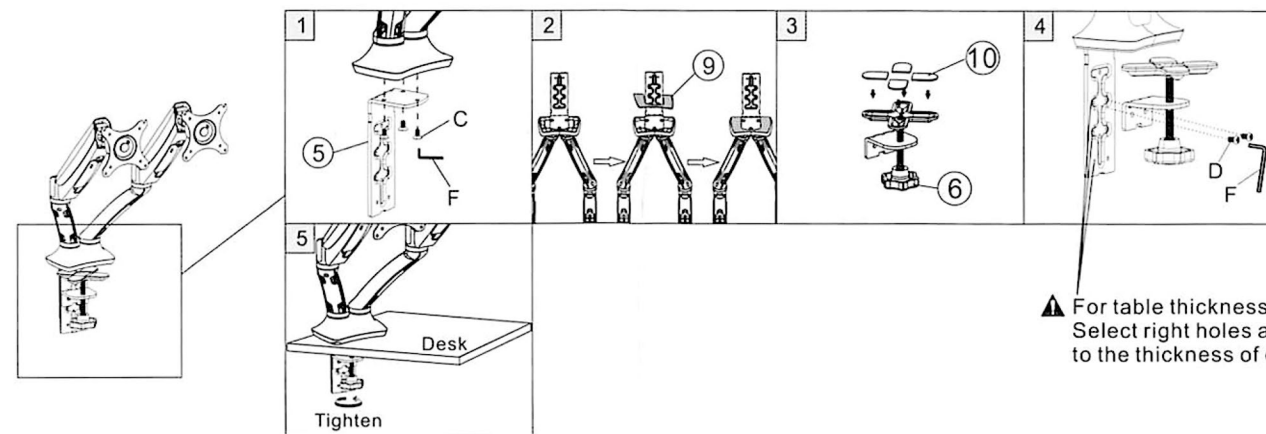
## STEP3

Attaching the monitor to the plate



## STEP2-A

Option 1: Clamp



▲ For table thickness:20-120mm  
Select right holes according to the thickness of desk

## STEP4

Using cord management

